

CABLEMASTER 210



Compact, economical Ethernet continuity and wiring tester

The CableMaster 210 is an economical, compact continuity and wiring tester for Ethernet cables. The ergonomic handheld tester is easy to operate, its large display shows easy-to-understand messages directly. It belongs to the basic equipment of every installer.

Fast and cost-effective testing of cabling is a must in modern networks to quickly find network faults. In addition, CableMaster 210 is the perfect test instrument for pre-testing a cabling before the actual acceptance measurement.

Unique in this class are the large backlit display and the built-in tone generator.

FEATURES

- Tests Ethernet cables for breaks, short circuits, swapped wires and split pairs with the push of a button
- Test cables up to 300 m long
- Support of 24 remote identifiers
- Removable remote unit
- Large, backlit LCD display with all test information, including PASS/FAIL indicator
- Built-in tone generator, compatible with Softing cable locators



ORDERING INFORMATION

Article number

226101

CableMaster 210

Scope of delivery: 1 tester with integrated remote, 2 AAA batteries, 1 quick start guide



TECHNICAL SPECIFICATIONS

Size	120 x 67 x 28mm
Weight with Battery	120g
Power Supply	2 x 1.5V AAA Alkaline
Voltage protection	60V DC, 55V AC
Operating temperature	-10 - +50°C
Storage temperature	-20 - +60°C
Humidity	10% - 80%, non-condensing
Maximum cable length	300m
Wiremap	according to ISO11801, EN50173, TIA568
Test port	RJ45 port

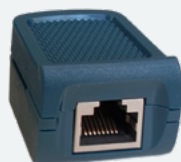
CableMaster 210 port



RJ45 test port
(coax via optional adapter)



Removable RJ45 remote port



KITS

Article number	226112
----------------	--------

CableMaster 210 Kit

Scope of delivery:
1 CableMaster 210 with detachable remote, 2 AAA batteries 1.5V and quick start guide, 1 RJ45 Port Identifier Set (#1 - #24), 2 patch cords, 1 CP15 Cable Probe, 1 storage bag



ACCESSORIES

RJ45 Port Identifier Set (#1 - #24)	226581
--	--------

Suitable for CableMaster, LinkXpert and NetXpert XG series

Coax Port Identifier Set (#1 - #20)	226517
--	--------

Suitable for CableMaster, LinkXpert and NetXpert XG series

Wiremap Identifier Set (#2 - #8)	226508
---	--------

Suitable for CableMaster, LinkXpert and NetXpert XG series

Adapter RJ45 to coax F	226195
-------------------------------	--------

1 adapter with RJ45 plug and coax F jack
Suitable for CableMaster, LinkXpert and NetXpert XG series

Cable Probe CP15	226007
-------------------------	--------

The Cable Probe CP15 is a sound tracker from Softing IT Networks. An acoustic signal indicates the distance to the cable (only for unshielded cables) or to the connector.



You can find additional accessories on our website, or contact us:

itnetworks.softing.com/contact

For more information please contact:

©2024 Softing IT Networks GmbH. In line with our policy of continuous improvement and feature enhancement, product specifications are subject to change without notice. Subject to errors and alterations. All rights reserved. Softing and the Softing logo are trademarks of Softing AG. CableMaster and the CableMaster logo are trademarks of Softing IT Networks GmbH. All other cited trademarks, product and company names or logos are the sole property of their respective owners.

HEADQUARTERS

Softing IT Networks GmbH
Richard-Reitzner-Allee 6
85540 Haar, Germany

+49 89 45 656 660
info.itnetworks@softing.com
itnetworks.softing.com