

WireXpert 500 Series

optimize!
softing



WireXpert 500 is an affordable and upgradeable cable certification tester that can grow with your cable certification needs. With the WireXpert 500, certify copper cable up to CAT 6A/Class E_A.

IT Networks



CABLE CERTIFICATION TESTER

<http://itnetworks.softing.com/us>

WireXpert 500 Series

WireXpert 500

Key Features

- Advanced cable certification up to 500 MHz
- Certifies to Industry standards – Class D/E/E_A & Category 5e/6/6A
- The 2 for 1 program gets you two WireXpert 500 certifier kits for the price of most any other certification kit on the market, and comes with 3 around 1 mode enabled
- Meets TIA and ISO Level III accuracy requirements
- Certification testing of Patch cords
- Industrial Ethernet testing with RJ45 and M12 connectivity, E2E link testing
- Advanced reporting and documentation
- Affordable certifier for premise cabling and Industrial Ethernet



Dual Control System™ Advantage

WireXpert 500 comes with an intuitive touch sensitive user interface, features bright color LCD screens on both the local and the remote tester! The Dual Control System (DCS™) features identical devices for remote and main unit – making it fast and simple to operate the test cycles. Whether used by two technicians or one person working alone, walking time between outlets is minimized.

Fast and simple

WireXpert 500 completes up to CAT 6A certification tests in seconds. It offers intuitive navigation through the on screen menus, and generates professional reports through the accompanying eXport PC software.



Proven accuracy

WireXpert 500 is based on measurement system independently verified by highly respected test laboratories including ETL.

The XpertCare Support Program

To protect the investment in cable certifiers, they require care and occasional maintenance. If you use your WireXpert constantly and are concerned about periods of downtime, we are offering you the XpertCare Support Program. XpertCare guarantees much more than the standard warranty, so that your investment is protected in the best possible manner.



Visit our website to find out more
<https://itnetworks.softing.com/support/xpertcare-support-program/>



Copper patch cord testing with WireXpert

WireXpert 500 offers an efficient way for quickly identifying and recording the performance of patch cords. With its fast and accurate dual-ended testing, WireXpert 500 patch cord test kits are suitable for both manufacturing test applications, as well as for incoming inventory inspection at end user premises. WireXpert 500 patch cord test kits are available for testing CAT 5e, CAT 6, and CAT 6A patch cords.

Industrial Ethernet cabling test

The WireXpert 500 industrial Ethernet cable test solution comprise of M12 adapter kits. With both channel and permanent link configurations and end-to-end using M12 industrial Ethernet connectors are supported. Industrial Ethernet kits supporting X-Coded M12 interfaces are available making it possible to effectively test 10-Gig ready Industrial Ethernet cables.

Coax cable test

WireXpert 500 also supports testing of coaxial cables for attenuation, length, resistance, delay and return loss with the optional coax test adapters.

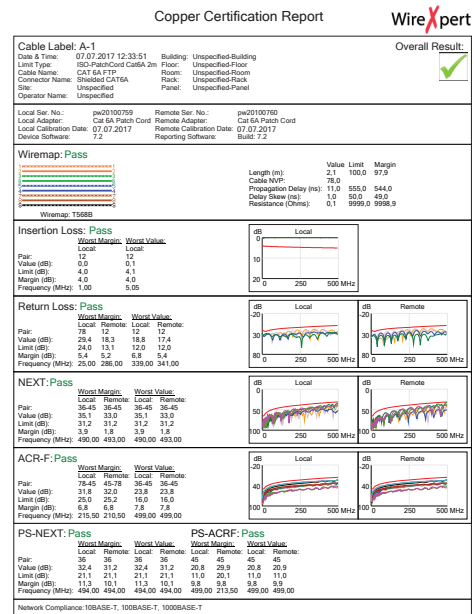
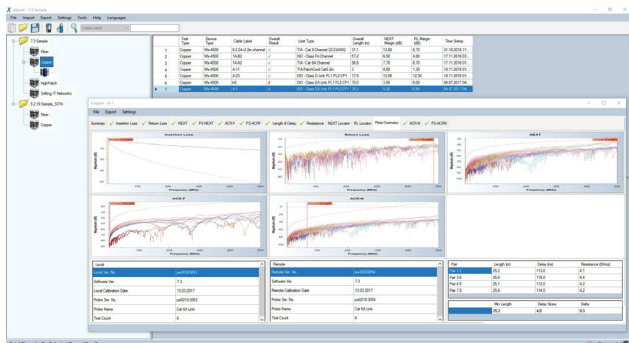
Adapters & Accessories for Copper Cable Certification

- Pair of Class E_A/CAT 6A Channel adapters
- Pair of Class E_A/CAT 6A Permanent link adapters
- Pair of coax adapters
- Pair of CAT 5e/6/6A patch cord adapters
- Hard carrying case

For more options and accessories, please contact your Softing IT Networks Reseller.

Professional Data Management with eXport Software

WireXpert 500 includes eXport computer-based reporting software. eXport facilitates data management and generation of professional reports and warranty documents. eXport Software enables list-based testing, a hierarchical cable labeling scheme. With eXport, it is possible to correct measurements which were accidentally performed with incorrect measurement standards; with re-certification, the operator can apply the right measurement standards to the data retroactively.



Screenshot of eXport and a Copper Certification Report

WireXpert 500 2 for 1

This is the best certification deal on the planet!
When you only need up to Cat 6A certification testing for copper cables, the 2 for 1 deal is the answer. Here's why...

Benefits of 2 for 1

- 2 certification kits for the price of 1. That's 4 testers, 4 displays, 4 processors
- 4 testers means you get 3 around 1 mode enabled (more on that below)
- That gives you amazing flexibility, efficiency, and savings!
- Ask about details and validity dates

The 3 around 1 mode Scenario



Imagine you have a tight project deadline. Your cable certification project is suddenly critical path.

OK, no problem, you decide to schedule 2 teams, 4 testers, 4 techs, certifying the project.

But, instead of 2 teams, what if all 4 techs could work together on 1 team instead of separately? That is, what if 3 of those testers could re-identify as remotes all talking back to 1 local?

With 3 around 1 mode, you have 3 techs running around the building or campus, while one local is in the MDF. All 3 remotes are certifying cables back to 1 local certifier. And you can do this with 4 techs and 2 WireXpert kits, the 2 for 1 program. That's huge!

With others, in order to have 3 remotes moving around the building or campus, you need 3 local testers stationary in the MDF. That's 6 testers and 6 techs, 3 of which are standing right next to each other. That's not efficient. And you would have to buy 6 testers.

Comparison Table	WireXpert 500 Copper	WireXpert 4500
Which is the one for you?	WireXpert 500	WireXpert 4500
Application	■	■ ■
Frequency Range	500 MHz upgradeable to 2,500 MHz	2,500 MHz
Max CAT/Class	CAT 6A/Class E _A	CAT 8/Class I & II
Dual Control System (DCS™) Touch screen on both units	■	■
Optional Video Fiber Inspection Probe		■
3 around 1 mode	with the purchase of 2 kits	with the purchase of 2 kits
Copper Passive Test and Measurement Parameters		
Wiremap	■	■
Length	■	■
Tone Generator	■	■
RF Measurements (NEXT; Insertion Loss, Return Loss, ...)	■	■
Delay Skew, Delay, Resistance	■	■
Fiber Passive Test and Measurement Parameters		
Wavelength		850 nm-1,300 nm 1,310 nm-1,550 nm
Length		■
Attenuation		■
Reporting		
PC Reporting software eXport	■	■

Shipping Configuration

All sets come with 2 power supplies, 2 headsets, a quick start guide, a 4 GB USB-Stick with software and manuals

WireXpert 500 (Copper)

- 1 Local & 1 Remote unit with 500 MHz copper test license
- 2 CAT 6A Link adapters including cables
- 2 CAT 6A Channel adapters
- Soft carrying case

2 for 1 is WireXpert 500 kit times 2. See promo for details.

WireXpert 4500 (Copper & Fiber)

- 1 Local & 1 Remote unit with 2500 MHz copper and fiber test license
- 2 CAT 6A Link adapters including cables
- 2 CAT 6A Channel adapters
- Hard carrying case

Note: Fiber test heads to be purchased separately

■ Copper ■ Fiber



NORTH AMERICA & CANADA

Softing Inc.
Knoxville, Tennessee
Phone: +1.865.251.5252
E-mail: sales.us@softing.com

Germany

Softing IT Networks GmbH
Richard-Reitzner-Allee 6
85540 Haar, Munich
Phone: +49 89 45 656 660
E-mail: info.itnetworks@softing.com

For technical information and support
please contact the Softing office in your
country.

<http://itnetworks.softing.com/us>

Parameter	Specification
WireXpert 500 COPPER TESTING	
Certification testing	TIA 568-C.2 CAT 5e, 6, 6A ISO/IEC 11801, EN 50173 Class D, E, E _A Patch-cord CAT 5e, 6, 6A testing
Max cable length for dual-ended Autotest	500 m
Insertion cycles	Channel: 10,000 typical Permanent link: 5,000 typical
TEST PARAMETERS	
Wiremap	As specified in TIA 1152, IEC 61935-1
Loop Resistance	0 to 40 Ω, ±0.1 Ω
Length	0 to 500 m, ±0.5 m (dual-ended testing)
Propagation Delay and Delay Skew	0 to 5000 ns, ±1 ns
Attenuation	0 to 70 dB, ±0.1 dB
Pair-to-Pair and Power-Sum NEXT	0 to 85 dB, ±0.2 dB
Pair-to-Pair and Power-Sum ACRF	0 to 85 dB, ±0.2 dB
Return Loss	0 to 40 dB, ±0.2 dB
ACRN, PSACRN	0 to 85 dB, ±0.5 dB
Advanced diagnostics	Time-domain fault Locator for RL and NEXT
Measurement accuracy	Exceeds TIA 1152 Level IIIe, IEC 61935 Level IIIe
Measurement frequency range	1-500 MHz

GENERAL SPECIFICATIONS	
Interfaces	Probe Interface, RJ-45 Ethernet, USB host and device, talk set, power jack
Display	6" industrial LCD, touch sensitive area on both units
Enclosure	Ruggedized plastic with rubber over-mold, withstands 1.5 m drop test on hard surface
Remote unit abilities	View test results, save tests, start autotest
Power supply	AC 100-240 V to 12 V, 3A power adapter
Input over-voltage protection	Protected against Telco voltages
Battery	Removable and rechargeable Li-Ion
Battery capacity	>8 hours continuous operation
Internal storage capacity	>6,000 copper test results with full plot information for CAT 6A
External storage	USB Flash Drive
Dimensions	223 X 124 X 70 mm (including a 6ACH adaptor)
Weight	1 kg
Supported languages	TW, CS, EN, FI, FR, DE, IT, JA, KO, PL, PT, RU, ES, SV, TR
Calibration period	1 year

ENVIRONMENTAL	
Operating temperature	0 to 40 °C
Storage temperature	-20 to 60 °C
Relative humidity	10% to 80%

MINIMUM SYSTEM REQUIREMENTS FOR REPORTING SOFTWARE	
Microsoft Windows Vista/7/8/10, 32 or 64 bits	
Intel Core 2 Duo, 2 GHz	
200 MB of free disk space	
1 GB RAM	
Microsoft.NET Framework 4.0	

For more information please contact:

©2024 Softing IT Networks. In line with our policy of continuous improvement and feature enhancement, product specifications are subject to change without notice. All rights reserved. Softing and the Softing Logo are trademarks or registered trademarks of Softing AG. All other trademarks, registered or unregistered, are sole property of their respective owners.