

**Precautions:**

- Be sure to turn off any laser sources before inspecting any fiber connectors, optical components, or bulkheads.
- Always wear the appropriate safety glasses. Be sure laser safety glasses meet federal and state regulations and are matched to the lasers used in your environment.
- Never look into a fiber or bulkhead while the system lasers are on, and never connect a fiber to a fiberscope while the system lasers are on.
- Never touch the end face of the fiber connectors.

**Features & Benefits**

- Cleans connections on backplanes and jumpers
- Superior for FTTh, FTTt, and FTTn
- Effective for the widest range of contaminants
- Easy to use for quick and reliable cleaning
- Rugged and durable, great for all work sites
- Designed for 1st time cleaning of up to 800 cleanings per kit

Sales: [sales@softing.us](mailto:sales@softing.us)  
 Support: [support@softing.us](mailto:support@softing.us)  
<https://itnetworks.softing.com/us/xpertclean/>

7209 Chapman Hwy  
 Knoxville, TN USA 37920  
 Tel: +1.865.251.5252  
 Fax: +1.865.579.4740

**CleanMachine****XpertClean For Optimal Fiber Optic Cleaning**

Softing products are designed for optimal cleaning of connectors using the XpertClean process. The last thing you want performance degradation due to a dirty fiber optic end face in the connector, or even worse, dust on one end face ground into the end face of the mating connector scratching the surface causing permanent damage.

Instead, when disconnecting fiber optic connectors or before connecting fiber optic cables, best practice is always to clean the end face, save a picture of the end face using your fiber optic microscope, and then test the cable.

**The CleanMachine with XpertClean process gives first time cleaning for all common soils:**

- Finger oils
- Mineral oils and grease
- Gels & pulling lubricants
- Dust, dirt & carbon
- Water & salt residue & more

The XpertClean process is industry proven, exceeding IEC 61300-3-35, IEC TR62627-01, and meeting Telcordia GR-2923-CORE and SAE Aerospace AIR6031.



2.5mm

CleanMachine for ST,SC,FC Fiber Optic End Faces  
 ST, SC, FC Connection Kit (Part #: XC-AC-CMACH-STSCFC)



1.25mm

CleanMachine for LC Fiber Optic End Faces  
 LC Connection Kit (Part #: XC-AC-CMACH-LC)

# CleanMachine

## Fast, Effective Bulk Fiber Connector End-Face Cleaning

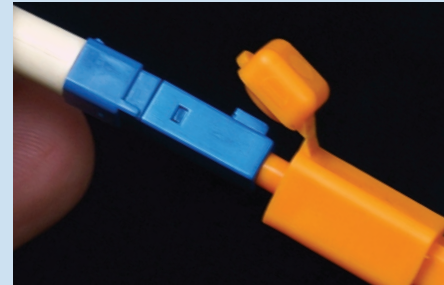
The CleanMachine provides a fast, simple method of fiber optic cleaning. End faces in bulkheads or on cable assemblies are both effortlessly cleaned the first time . . . every time.

The CleanMachine has an easy to use mechanism that advances fabric over a cleaning tip with just a short push and click of the tool. Using the CleanMachine is part of the fast, easy and repeatable XpertClean process.



- Cleans connectors on back plane and on jumpers
- Effective for the widest range of contaminants
- Easy to use for quick and reliable cleaning
- Rugged and durable, great for all work sites
- Up to 800 cleanings per kit

CleanMachine click passes the fabric over the end face removing contaminants from the end face. This provides cleaning in one simple step.



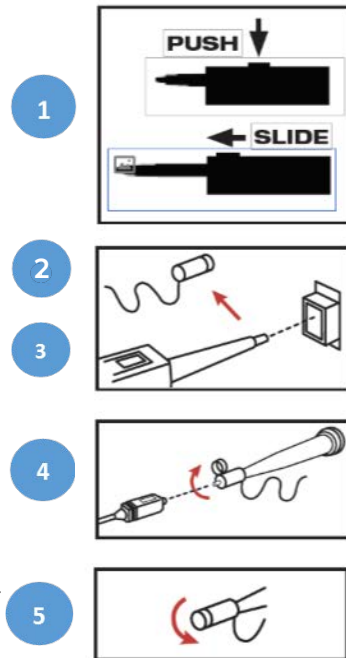
Flip open cap for cleaning connectors



Remove cap for cleaning adapters and bulkheads

### Directions for use:

- 1 Extend the CleanMachine tip by pushing the thumb notch and sliding the tip forward.
- 2 Removing the CleanMachine cap to expose cleaning tip
- 3 Insert the cleaning guide directly into the bulkhead to be cleaned. Push in gently until CleanMachine clicks. Recap CleanMachine when finished.
- 4 For cleaning a patch cord connector, place cap back onto the CleanMachine tip. Flip open top and push connector. Depress CleanMachine until clicking is heard. Remove connector.
- 5 Recap CleanMachine when finished to maintain cleanliness.



# CleanSlide

## For hard to reach fiber end face cleaning

1. Lift cap
2. Move connector holder to the left or right side for initial positioning
3. Insert connector into holder with connector key turned to the left. SC, FC, ST inserts into larger left hole. MU and LC insert into smaller right hole of holder.
4. Move holder only in one direction. Do not push, only slide left or right in one direction.
5. Do not use with cleaning liquid
6. When you see a color indicator on cleaning material, the CleanSlide is ready to be reordered.

